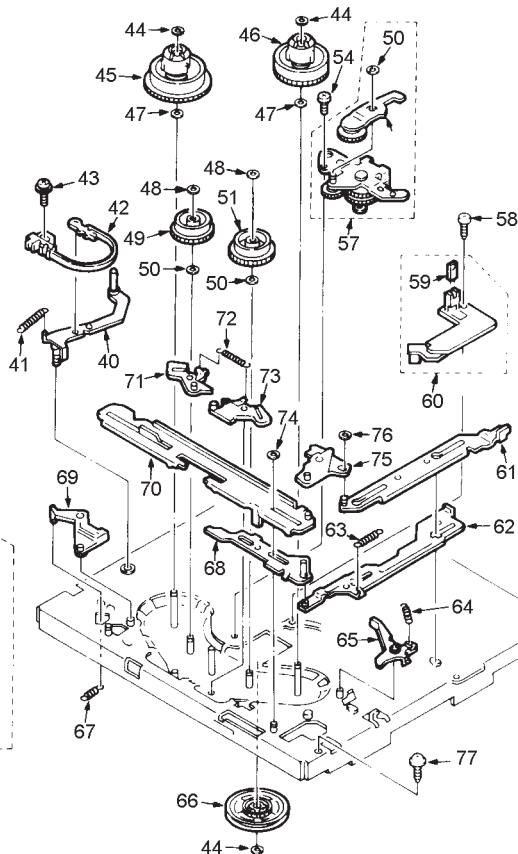
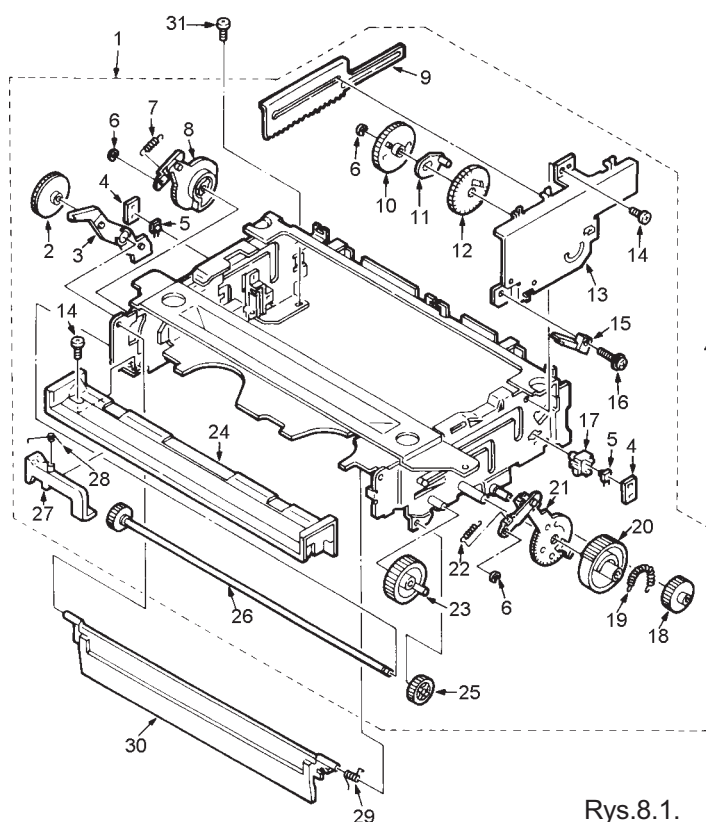


8. Rysunki złożeniowe i wykazy elementów magnetowidu VHR-4100EE

Poz. na rys. 8.1	Numer oryginalny	Opis
1	613 022 0509	COMPL, CASSETTE MECHA
2	613 022 2572	GEAR, IDLER L
3	613 022 2275	LEVER, DOOR OPENER
4	613 022 0585	LID
5	407 098 3201	PHOTO COUPLE PN150SAN
6	411 015 9801	RING E 2.3
7	613 022 1643	SPRING, LINK L
8	613 022 0073	ASSY, GEAR, LEVER L
9	613 022 2695	RACK
10	613 022 2633	GEAR, LOCK
11	613 021 9916	ASSY, LEVER, PINION
12	613 022 2626	GEAR, PINION
13	613 021 9657	ASSY, BRACKET, GEAR
14	411 027 1305	SCR S-TPG BIN 2.6×4
15	613 006 4479	SPECIAL SWITCH
16	411 106 9208	SCR PAN+SW+W 2×9
17	613 022 0936	HOLDER, TRANSISTOR
18	613 022 2619	GEAR, IDLER
19	613 022 1667	SPRING, GEAR MAIN
20	613 022 2596	GEAR, MAIN
21	613 022 0097	ASSY, GEAR, LEVER R
22	613 022 1674	SPRING, LINK R
23	613 022 2602	GEAR, IDLER R
24	613 022 4064	BOARD, UNDER
25	613 022 2558	GEAR, COUPLE R
26	613 022 0226	ASSY, ROD
27	613 022 2237	LEVER, SAFETY SW
28	613 022 1827	SPRING, SAFETY SW
29	613 022 1803	SPRING, DOOR
30	613 022 4101	CASSETTE DOOR
31	411 001 8702	SCR BIN 3×6
40	613 021 9831	ASSY, LEVER, TENSION
41	613 022 1537	SPRING, LEVER TENSION
42	613 021 9701	ASSY, HOLDER, BAND

Poz. na rys. 8.1	Numer oryginalny	Opis
43	411 036 2805	SCR PAN+SW+W 2.6×6
44	411 109 1605	WASHER Y 2.6×6×0.25
45	613 022 0127	ASSY, REEL, SUPPLY
46	613 022 0110	ASSY, REEL, TAKE UP
47	412 021 5306	SPECIAL WASHER 3.1×6×0.3T
lub	412 015 8900	SPECIAL WASHER 3.1×6×0.4T
lub	412 015 8504	SPECIAL WASHER 3.1×6×0.5T
48	411 109 1506	WASHER Y 2.1×6×0.25
49	613 022 2473	GEAR, REEL SUPPLY
50	412 026 7305	SPECIAL WASHER 2.6×6×0.25
51	613 022 2480	GEAR, REEL TAKE UP
54	411 031 0905	SCR BIN 2.6×4
56	613 022 0134	ASSY, IDLER
57	613 022 0141	COMPL, IDLER, CLUTCH
58	411 076 5804	SCR TPG BIN 2.6×8
59	407 016 7205	LED LN59
60	613 078 6302	COMPL, MC-4
61	613 021 9985	ASSY, SLIDE, ACT PLATE
62	613 021 9992	ASSY, SLIDE, C BRAKE
63	613 022 1612	SPRING, RETURN SLIDE
64	613 022 1506	SPRING, SUB T
65	613 022 0196	ASSY, BRAKE, SUB T
66	613 077 3647	PULLEY, REEL
67	613 022 1490	SPRING, SUB SUPPLY
68	613 022 2374	SLIDE, ACT BRAKE
69	613 022 2886	BRAKE, SUB SUPPLY
70	613 022 0004	ASSY, SLIDE, M PLATE
71	613 080 9216	ASSY, BRAKE, SUPPLY
72	613 022 1544	SPRING, MAIN BRAKE
73	613 080 9209	ASSY, BRAKE, TAKE UP
74	411 109 3005	WASHER Y 2.6×5×0.5
75	613 022 2015	LEVER, CONT PLATE
76	411 109 1407	WASHER Y 2.1×5×0.25
77	411 021 7907	SCR S-TPG BIN 4×12



Rys.8.1.

Baza Porad Serwisowych

Mechanizm P88, P89

Rysunki złożeniowe i wykazy elementów magnetowidu VHR-4100EE

Poz. na rys. 8.2	Numer oryginalny	Opis
1	613 022 0257	COMPL, CYLINDER, 2N2P
lub	613 080 1647	COMPL, CYLINDER, 2N2P
2	411 038 1608	SCR PAN+W 3×8
3	613 022 0264	ASSY, CYLINDER, UPR 2N2P
lub	613 080 1654	ASSY, CYLINDER, UPR 2N2P
4	613 022 0271	ASSY, CYLINDER, LWR2
lub	613 080 1661	ASSY, CYLINDER, LWR 2
5	613 081 4036	SPACER, MOTOR
6	613 079 0712	BRACKET, MOTOR CYL
7	412 026 8302	SPECIAL SCREW M2.3×3
8	613 022 1001	BASE, CYLINDER
9	411 047 7509	SCR PAN+FLG 3×6
10	613 022 4026	STATOR, MOTOR CYL
11	411 047 5000	SCR PAN+FLG 2.6×8
12	411 044 9209	SCR PAN+SW 2.3×8
13	613 022 4019	ROTOR, MOTOR CYL
14	411 044 9001	SCR PAN+SW 2.3×6
15	613 022 1766	SPRING, ADJUST GUIDE
16	613 053 3227	SPECIAL WASHER
17	613 058 3307	TAPE GUIDE
18	412 026 2607	SPECIAL NUT
19	613 081 7501	ASSY, CAP
20	613 021 9961	ASSY, SLIDE, ACT PINCH
21	613 021 9800	ASSY, LEVER, CAM PINCH
22	411 109 2008	WASHER Y 3.1×8×0.5
23	613 022 1797	SPRING, ACE HEAD
24	613 021 9640	COMPL, BRACKET, HEAD
25	613 051 4615	SPACER
26	412 015 8207	SPECIAL NUT
27	411 120 0007	SCR PAN+SW+W 2.6×5
28	613 022 0752	BRACKET, STOPPER
29	613 022 1575	SPRING, LINK LOCK
30	613 022 1582	SPRING, SLIDE BRAKE
31	613 022 2725	DAMPER
32	613 022 0059	ASSY, SLIDE CAM
33	412 021 1407	SPECIAL SCREW
34	613 079 1030	DAMPER, MOTOR
35	613 079 0989	PLATE, MOTOR
36	613 079 0736	BRACKET, STAND
38	411 109 1902	WASHER Y 3.1×6×0.5
39	613 077 3579	GEAR, HELICAL
40	613 021 9534	ASSY, DEW SENSOR
41	411 040 2303	SCR PAN 2.6×5
42	613 077 3180	BRACKET, HOLDER
43	411 031 1209	SCR BIN 2.6×5
44	613 079 6868	ASSY, BRACKET, MOTOR
44-A	613 078 7682	ASSY, BRACKET, MOTOR

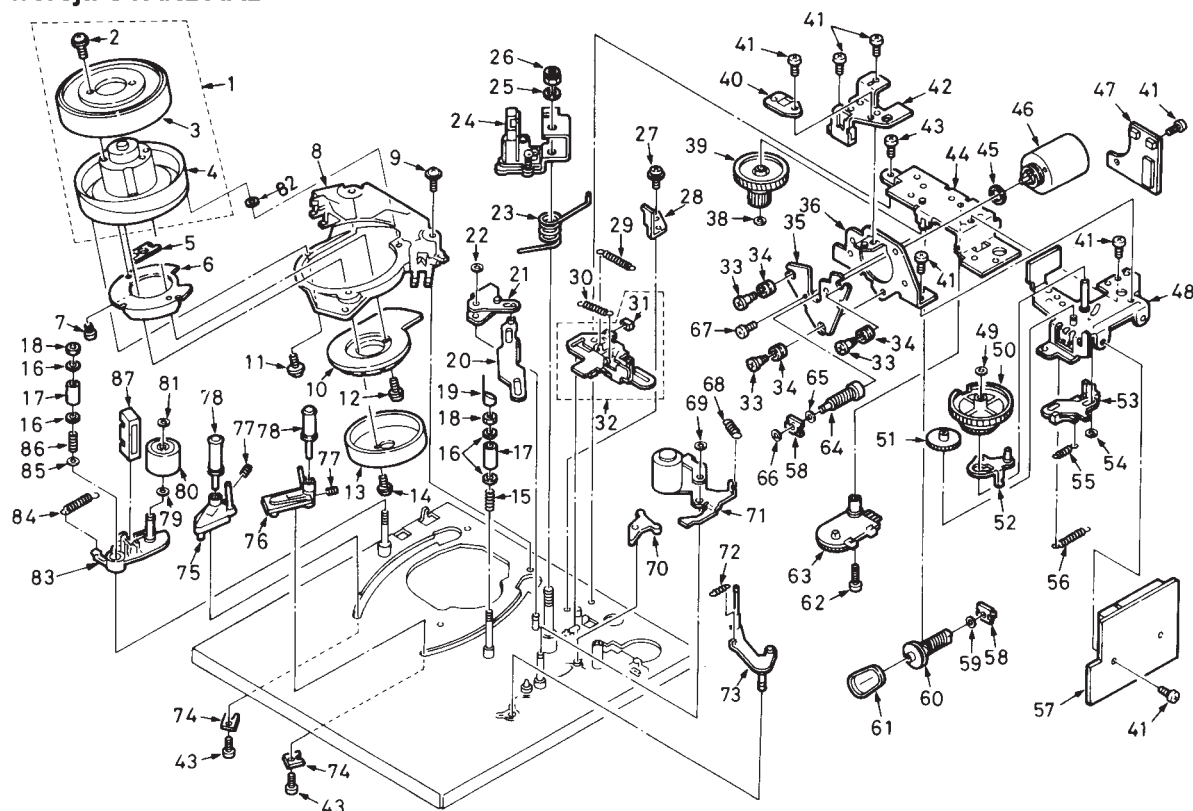
Poz. na rys. 8.2	Numer oryginalny	Opis
45	613 077 3616	DAMPER, WORM
46	613 021 9527	ASSY, LOADING MOTOR
47	613 078 6623	COMPL, MC-3
47-A	613 078 6517	COMPL, MC-3
48	613 078 7705	ASSY, BRACKET, FRONT
49	613 027 0504	WASHER 4.1×6.5×0.5
50	613 077 3586	GEAR, HELICAL FRONT
51	613 022 2534	GEAR, FRONT LOAD
52	613 021 9824	ASSY, LEVER, FRONT
53	613 022 0011	ASSY, SLIDE, FRONT
54	411 109 3005	WASHER Y 2.6×5×0.5
55	613 022 1636	SPRING, LEVER ACT
56	613 022 1629	SPRING, LEVER LOAD
57	613 078 6494	COMPL, MC-2
57-1	403 001 3108	CERAMIC 0.1U Z 16V, INCLUDE MC-2
57-2	613 009 8309	SOCKET 26P, INCLUDE MC-2
58	613 077 3227	HOLDER, WORM
59	613 027 0627	WASHER 2.1×6×0.5
60	613 078 8344	ASSY, WORM, LOAD
61	613 022 2985	BELT, LOADING
62	411 002 5700	SCR PAN 2.6×12
63	613 077 4361	ROTARY SWITCH
64	613 078 8320	ASSY, WORM, FRONT
65	613 027 0375	WASHER 2.1×4.0×0.13
66	613 053 2381	SPECIAL WASHER
67	411 040 0507	SCR PAN 2.6×3
68	613 022 1483	SPRING, PINCH ROLLER
69	411 109 2107	WASHER Y 3.6×6×0.5
70	613 078 8160	COMPL, LEVER, ACT BRAKE
71	613 022 0158	COMPL, PINCH ROLLER
72	613 022 1568	SPRING, REVIEW LEVER
73	613 021 9886	ASSY, LEVER, REV GUIDE
74	613 022 1919	PLATE, GUIDE
75	613 021 9725	ASSY, BASE, ROLLER S
76	613 021 9732	ASSY, BASE, ROLLER T
77	411 063 0904	SCR SET HEX-SCT 2×3
78	613 022 0233	ASSY, GUIDE, ROLLER
79	412 026 7800	SPECIAL WASHER 0.25T
80	613 080 6703	IMPEDANCE ROLLER
81	411 109 2602	WASHER Y 1.5×4×0.25
82	412 029 8606	WASHER 3.2×5.5×0.2
83	613 021 9893	ASSY, LEVER, FE HEAD
84	613 022 1698	SPRING, ERASE HEAD
85	411 109 1704	WASHER Y 6.4×10×0.25
86	613 022 1773	SPRING, GUIDE SUPPLY
87	613 022 4224	FTE HEAD

Baza Porad Serwisowych

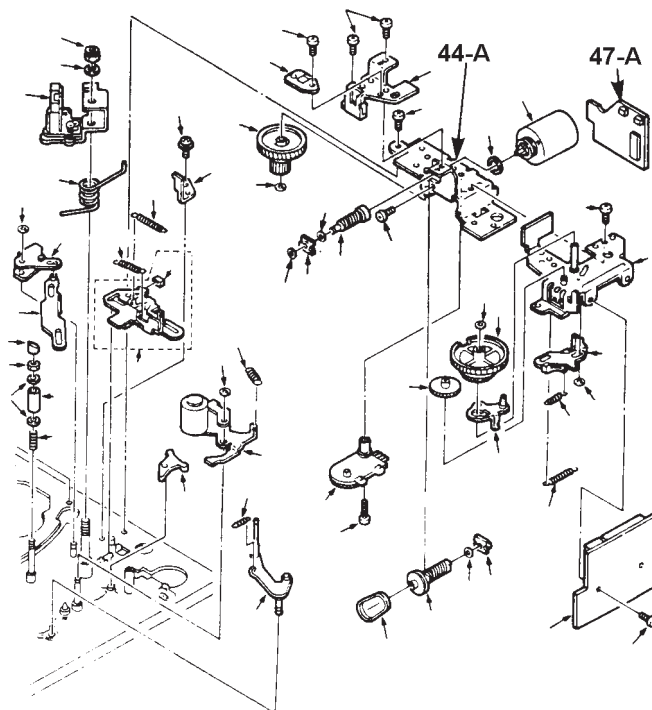
Mechanizm P88, P89

wersja STANDARD

Rysunki złożeniowe i wykazy elementów magnetowidu VHR-4100EE



wersja A



Uwaga:

1. W wersji „A” nie występują pozycje 33, 34, 35 i 36.
2. W wersji „A” pozycjom 44 i 47 odpowiadają odpowiednio pozycje 44-A i 47-A.
3. Wszystkie pozostałe elementy są jednakowe dla wersji „A” i wersji „STANDARD”.
4. Wersja „A” mechanizmu stosowana jest w modelach o numerach seryjnych od No. 76110001 do No. 76115000.

Rys.8.2.

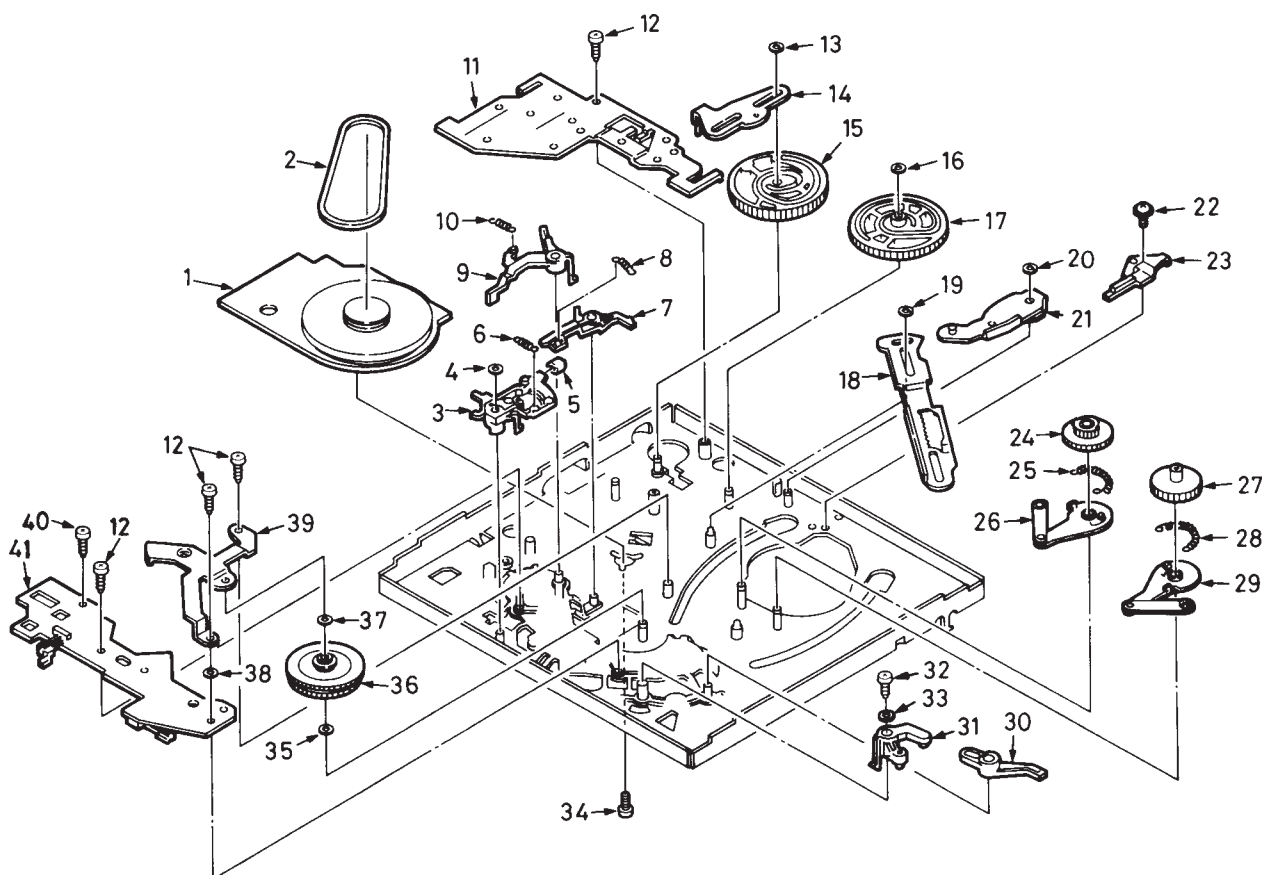
Baza Porad Serwisowych

Mechanizm P88, P89

Rysunki złożeniowe i wykazy elementów magnetowidu VHR-4100EE

Poz. na rys. 8.3	Numer oryginalny	Opis
1	613 022 4484	MOTOR, CAPSTAN
lub	613 080 8912	MOTOR, CAPSTAN
2	613 022 2978	BELT, REEL DRIVE
3	613 021 9848	ASSY, LEVER, CLUTCH
4	411 015 4301	RING CS 3
5	613 079 1023	DAMPER, LEVER CLUTCH
6	613 022 1520	SPRING, LEVER CLUTCH
7	613 022 2053	LEVER, CHANGE CLUTCH
8	613 022 1711	SPRING, CHANGE CLUTCH
9	613 081 7518	ASSY, BRAKE, CAPSTAN
10	613 022 1513	SPRING, CAPSTAN
11	613 022 0837	BRACKET, REINFORCE
12	411 021 3107	SCR S-TPG BIN 2.6×8
13	411 109 2008	WASHER Y 3.1×8×0.5
14	613 021 9978	ASSY, SLIDE, CAM PLATE
15	613 022 2701	CAM, MODE
16	411 109 1902	WASHER Y 3.1×6×0.5
17	613 022 2718	CAM, MAIN
18	613 022 2664	RACK, LOAD
19	411 109 1803	WASHER Y 2.6×6×0.5
20	411 109 2206	WASHER Y 3.6×8×0.5
21	613 021 9794	ASSY, LEVER, CAM LOAD
22	411 047 6809	SCR PAN+FLG 3×4
23	613 021 9763	ASSY, EARTH, CYL

Poz. na rys. 8.3	Numer oryginalny	Opis
24	613 022 2435	GEAR, LOAD TAKE UP
25	613 022 1551	SPRING, GEAR LOAD
26	613 021 9879	ASSY, LEVER, LOAD T
27	613 022 2428	GEAR, LOAD SUPPLY
28	613 022 1704	SPRING
29	613 021 9862	ASSY, LEVER, LOAD S
30	613 022 2039	LEVER, RETURN TENSION
31	613 021 9817	ASSY, LEVER, CONTROL
32	411 022 8903	SCR S-TPG PAN 2.3×12
33	411 087 6005	WASHER V 2.6×7.5×0.5
34	411 040 2303	SCR PAN 2.6×5
35	412 015 8603	SPECIAL WASHER
36	613 022 0066	ASSY, GEAR, FRICTION
37	411 109 1605	WASHER Y 2.6×6×0.25
38	411 102 9905	WASHER Y 3.2×8×1
39	613 079 8121	BRACKET, PULLEY
40	411 100 0300	SCR S-TPG BIN 2.6×5
41	613 077 9489	COMPL, MC-1
41-1	401 024 6403	CARBON 100 JA 1/6W R 3 INCLUDE MC-1
41-2	401 026 0607	CARBON 270 JA 1/6W R 1, INCLUDE MC-1
41-3	613 022 4538	SW, SPECIAL, FRONT END, INCLUDE MC-1
41-4	613 022 4545	SPECIAL SWITCH, E-P, INCLUDE MC-1
41-5	407 094 1300	PHOTO COUPLE SPI-315-04-C, INCLUDE MC-1
41-6	613 022 1155	SPACER, PHOTO SENSOR, INCLUDE MC-1



Rys.8.3.

Baza Porad Serwisowych

Mechanizm P88, P89

9. Zestawienie magnetowidów z podobnym mechanizmem

FISHER	ITT (c.d.)	OCEANIC (c.d.)	SANYO (c.d.)	SIEMENS (c.d.)
FVH-1445	VR-3759	VR-3701	VHR-5100	FM-603
FVH-D125	VR-3760	VR-3721	VHR-5200	FM-605
FVH-D230	VR-3761	VR-3741	VHR-5220	FM-607
FVH-D250	VR-3769	VR-3751	VHR-5300	FM-608
FVH-D270	VR-3770	PALLADIUM	VHR-5350	FM-617
FVH-D370	VR-3781	235/075	VHR-5600	FM-619
FVH-P1100	VR-3782	299/189	VHR-5700	FM-620
FVH-P120	VR-3792	299/200	VHR-6100	FM-621
FVH-P1200	VR-3799	299/227	VHR-6500	FM-623
FVH-P1250	VR-3920	299/235	VHR-6850	FM-625
FVH-P130	VR-3959	299/243	VHR-7100	FM-626
FVH-P132	VR-9719	701/297	VHR-7200	FM-628
FVH-P1340	VR-9720	701/432	VHR-7250	FM-630
FVH-P1400	LUXOR	701/564	VHR-7260	FM-632
FVH-P1410	3701	701/912	VHR-7300	FM-634
FVH-P1440	3721	723/541	VHR-7400	FM-636
FVH-P1500	3731	723/568	VHR-7440	FM-639
FVH-P1700	3761	723/649	VHR-7500	FM-701
FVH-P1740	3781	771/171	VHR-7520	FM-703
FVH-P200	4722	SALORA	VHR-7530	FM-705
FVH-P210	4742	SV-6800	VHR-7540	FM-708
FVH-P250	4762	SV-6900	VHR-7700	FM-709
FVH-P3	9281	SV-8810	VHR-7800	SONITRON
FVH-P300	9283	SV-8820	VHR-7810	VS-T120
FVH-P310	9284	SV-8850	VHR-8000	SONY
FVH-P320	9292	SV-8870	VHR-8070	SLV-125
FVH-P410	929S	SV-8910	VHR-8100	SLV-213
FVH-P420/KV/S	VR-3701	SV-8920	VHR-8101	SLV-215
FVH-P430S	VR-3721	SV-8970	VHR-8200	SLV-225
FVH-P440	VR-3731	SANYO	VHR-8250	SLV-235
FVH-P445	VR-3761	VHR-130	VHR-8500	SLV-252
FVH-P470S	VR-3781	VHR-134	VHR-8700	SLV-255
FVH-P475	NOKIA	VHR-135	VHR-8800	SLV-262
FVS-D290	NOKIA3720	VHR-14	VHR-8801	SLV-E10
FVS-P495	NOKIA3732	VHR-141	VHR-D4400	SLV-E15
GRAETZ	NOKIA3742	VHR-143	VHR-D4410	SLV-E20
TR-91	NOKIA3759	VHR-15	VHR-D4500	SLV-E25
TR-94	NOKIA3782	VHR-150	VHR-D4550	SLV-E3
TR-95	SVR-3799	VHR-151	VHR-D4600	SLV-E30
TR-99	VCR-4764	VHR-153	VHR-D4610	SLV-E35
INTERFUNK	VR-3720	VHR-154	VHR-D4700	SLV-X1
VR-9719	VR-3722	VHR-16	VHR-D4710	SLV-X20
ITT	VR-3730	VHR-170	VHR-D4800	SLV-X3
SVR-3799	VR-3731	VHR-171	VHR-D4890	UNIVERSUM
VR-3520	VR-3732	VHR-190	VHR-D6700	065.566
VR-3701	VR-3742	VHR-194	VHR-S700	065.567
VR-3702	VR-3749	VHR-4100	VHR-S800	961.669
VR-3719	VR-3759	VHR-4105	SCHAUB-LORENZ	969.549
VR-3720	VR-3770	VHR-4150	4722	969.609
VR-3721	VR-3782	VHR-4160	4742	981.549
VR-3722	OCEANIC	VHR-4200	TR-4722	981.799
VR-3730	5702	VHR-4300	TR-4723MS	982.779
VR-3731	5722	VHR-4350	TR-4742	983.799
VR-3732	5743	VHR-4500	SIEMENS	983.809
VR-3742	5752	VHR-4770	FM-601	985.119
VR-3749	5753	VHR-5080		985.129